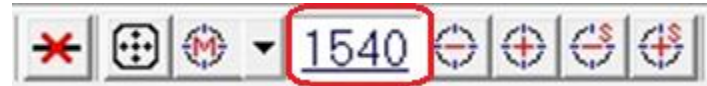


Advance (4)

□ Calibration

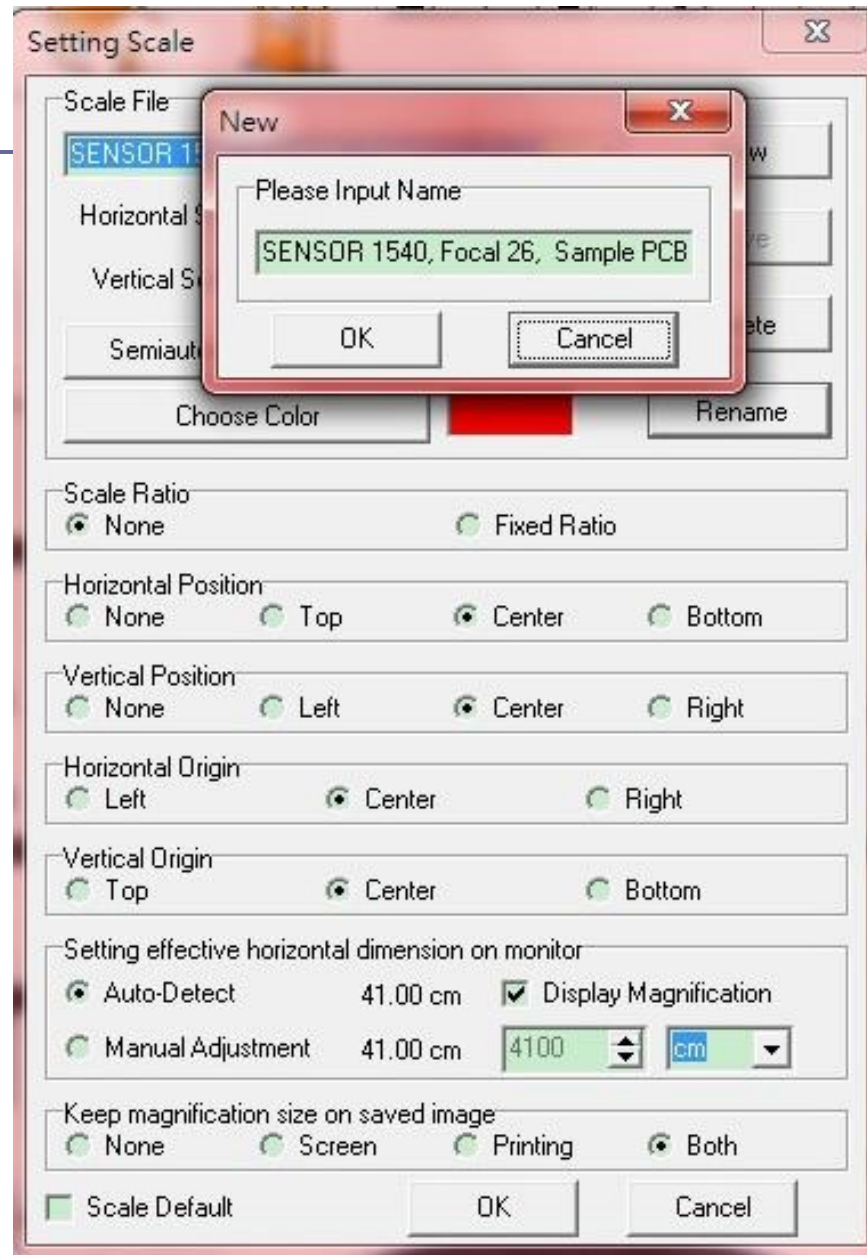
- Place Calibrator ruler under lens, use Device Control to find focus.
Write down sensor position



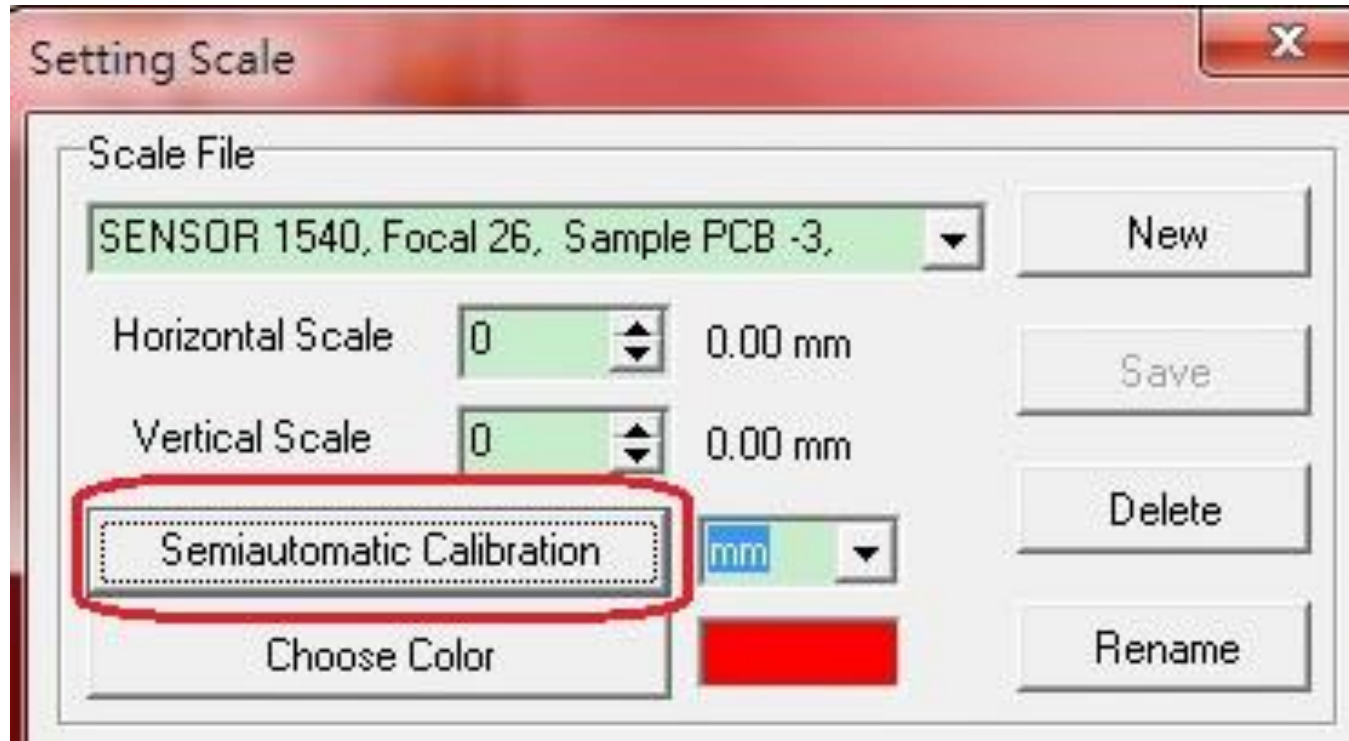
- Choose Scale Setting from Measurement mode, create a new file. [See me](#)
- Choose “Semi-Auto Calibration” [See me](#)
- Enter Horizontal size
- Choose “Horizontal Fix”, draw a line following calibrator scale
- Click “Finish” [See me](#)

Note: 1. The longer line you draw, the more accurate scale you get.
2. If the object has different height, do not use Device control mode to find focus, please ONLY use hand to adjust knob manually.

Create New Scale File



Auto-Semi Calibration



Calibration

Calibration Scale [SENSOR 1540, Focal 26, Sample PCB -3,]

FL

27mm

L=27.000mm

3

Input Measurement Length 2700 27.00 mm

Move Distance 947.00 Display Scale Finished

Fixed Horizontal or Vertical Axis

None Horizontal Fixed Vertical Fixed

4